



Redefining
Primary Healthcare

PPHI SINDH
Research & Training Wing



COVID-19 Impact on Health Service Delivery @ PPHI HFs

Impact on Health Service Delivery @ PPHI HFs

Vol. II
May, 2020

A Comparative Analysis of Health Service Provision before and during COVID-19



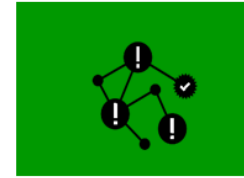
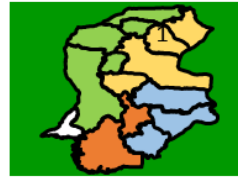
PPHI SINDH's Portfolio



Redefining
Primary Healthcare

PPHI Sindh Operational Area

5
Regions



25
Districts

PPHI HFs

311
BHU+



923
BHU/Dispensaries

Staff Info

1598
Medical Staff



5683
Paramedical Staff

EPI Centers and Staff

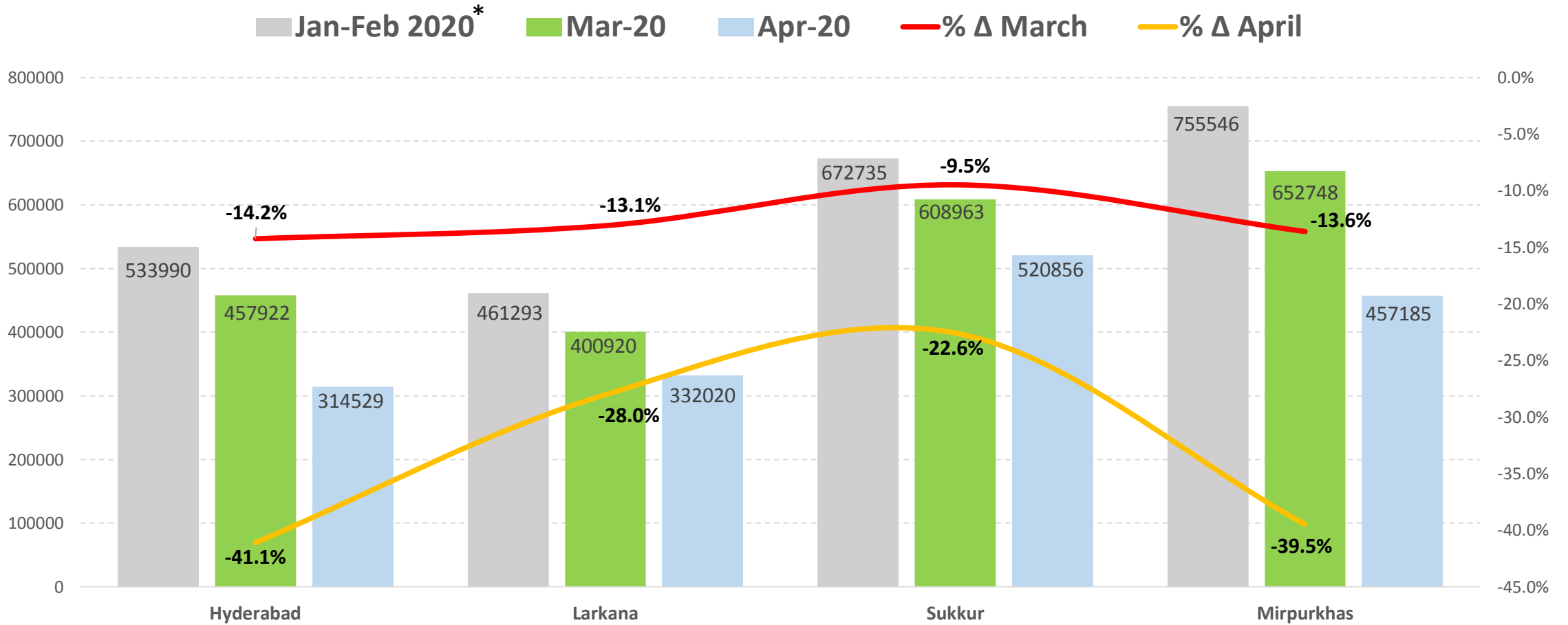
795
EPI Centers



1460
Vaccinators

Out Patient Turnover & % Change Over Time – Region wise

(before and during COVID-19 Outbreak – Jan-Feb 2020 vs Mar-20 & Apr-20)



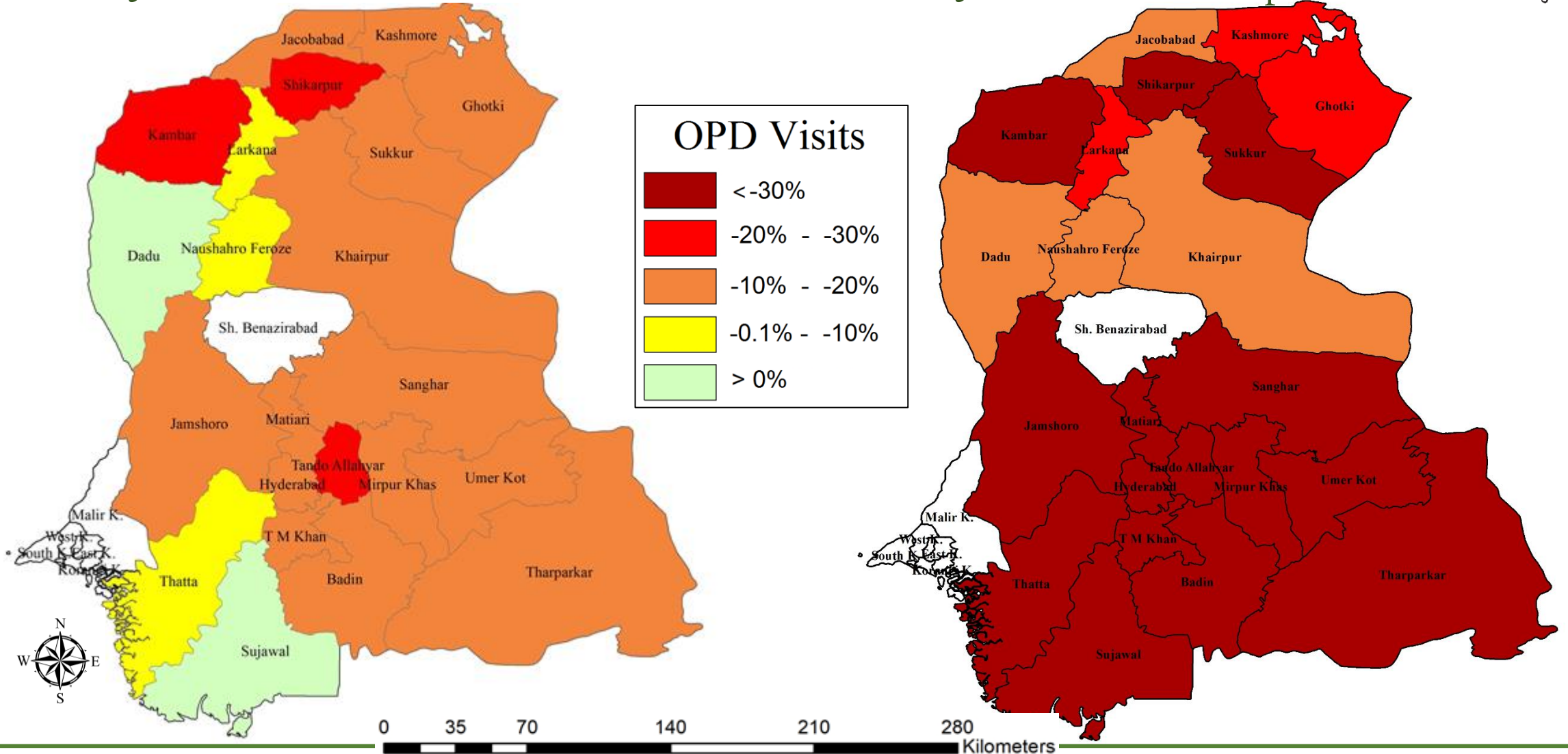
* Showing Average of Jan and Feb months

District specific Map Showing % Change in OPD Turnover

Redefining Primary Healthcare

Jan-Feb 2020 vs Mar 2020

Jan-Feb 2020 vs Apr 2020

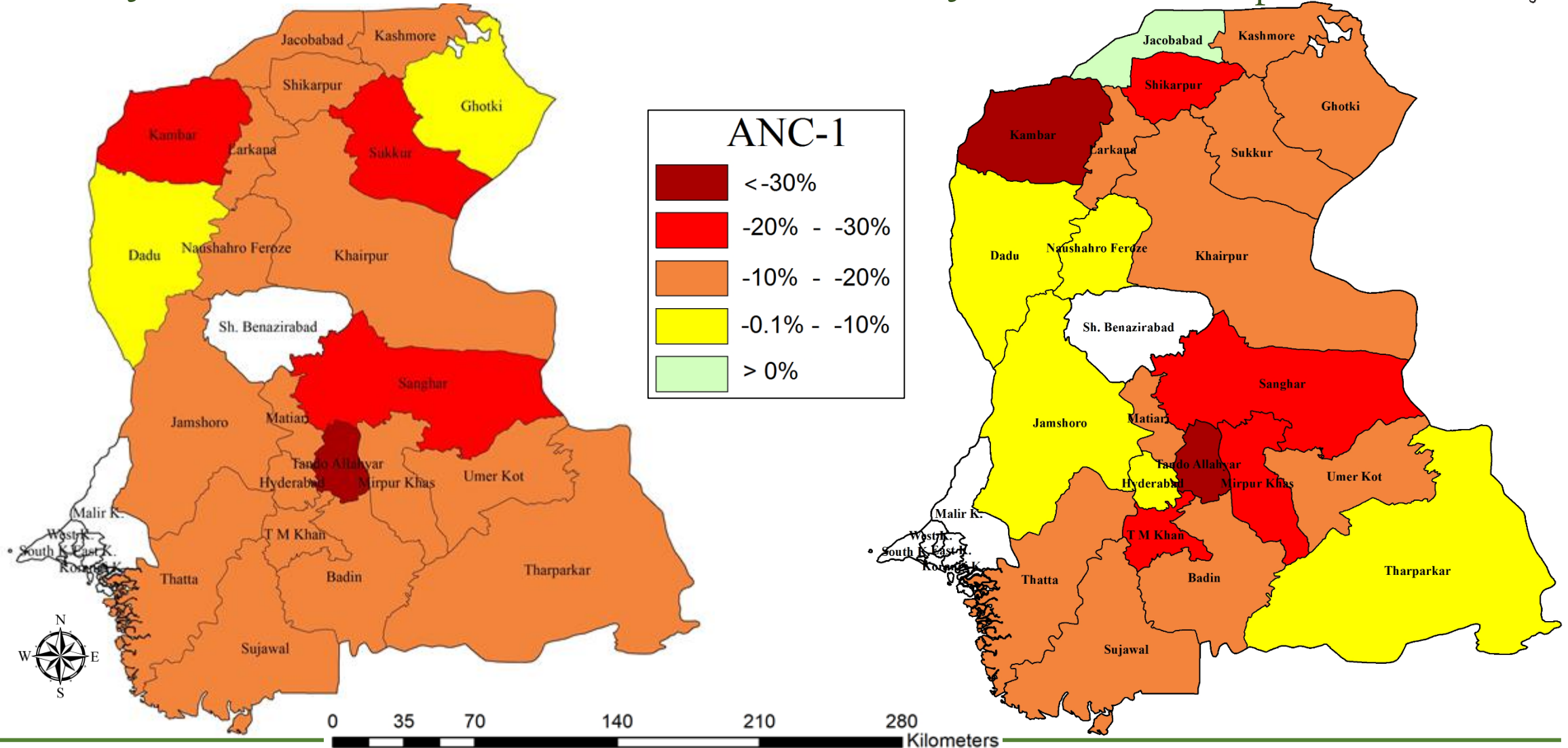


District specific Map Showing % Change in ANC-I Coverage

Redefining Primary Healthcare

Jan-Feb 2020 vs Mar 2020

Jan-Feb 2020 vs Apr 2020

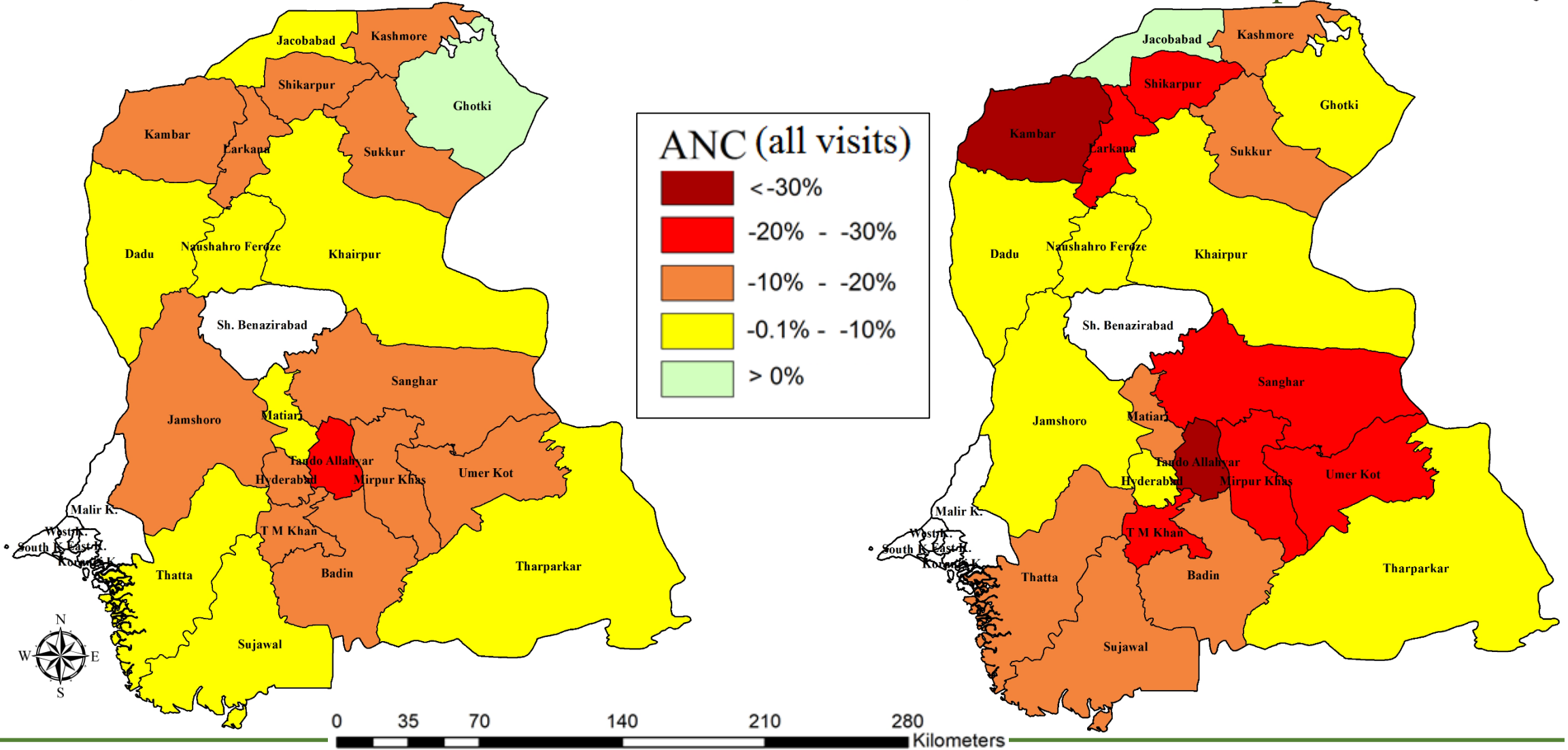


District specific Map Showing % Change in ANC-All Visits Coverage

Redefining Primary Healthcare

Jan-Feb 2020 vs Mar 2020

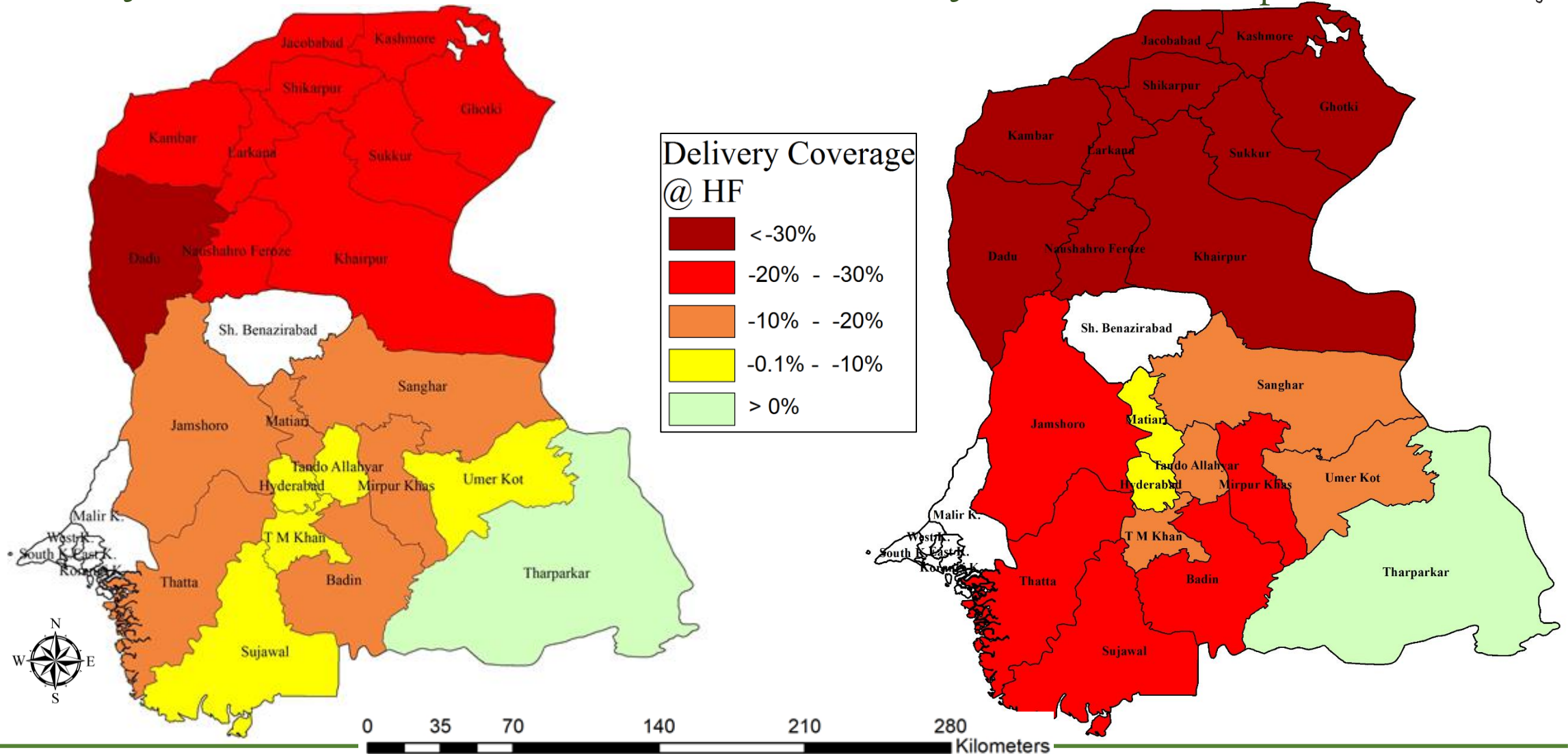
Jan-Feb 2020 vs Apr 2020



District specific Map Showing % Change in Facility-based Delivery Coverage

Jan-Feb 2020 vs Mar 2020

Jan-Feb 2020 vs Apr 2020

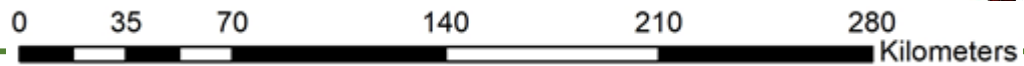
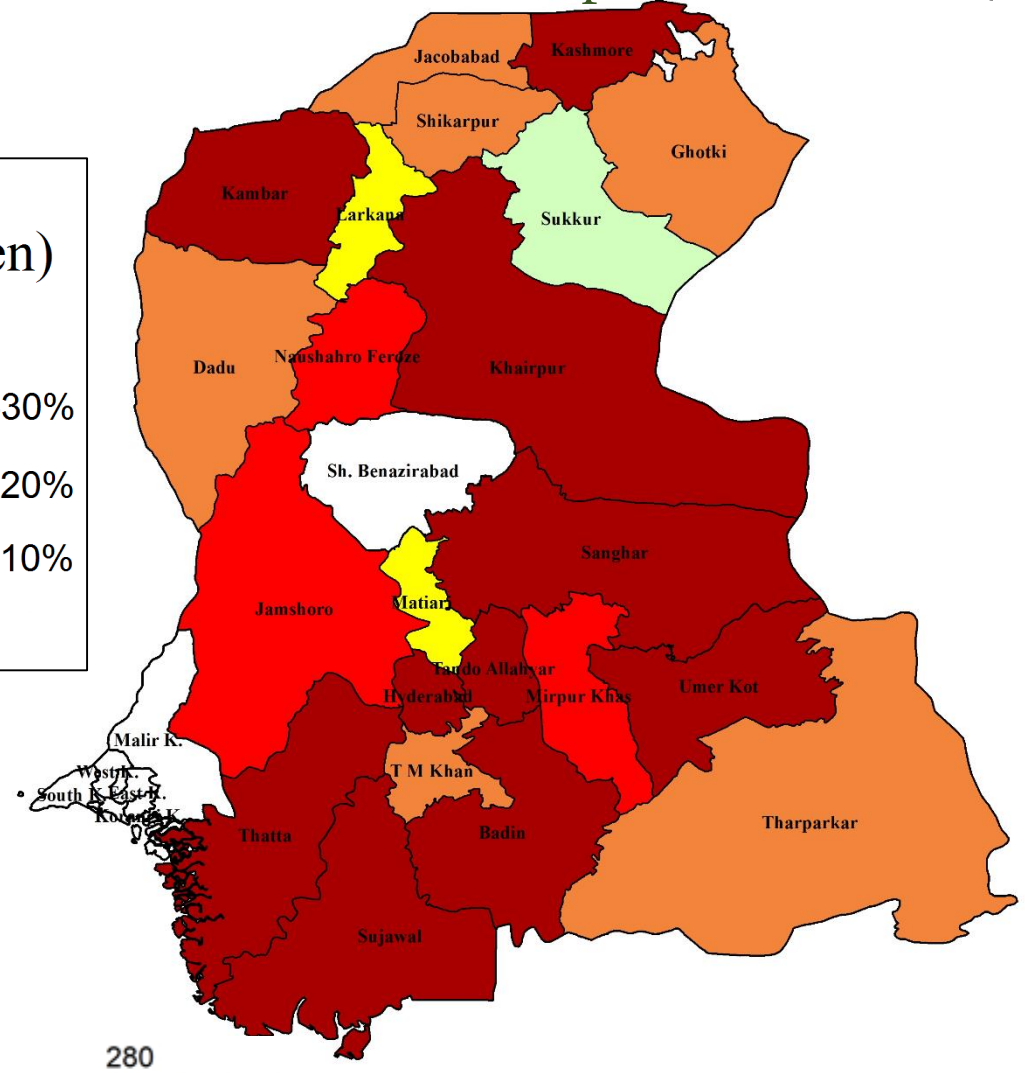
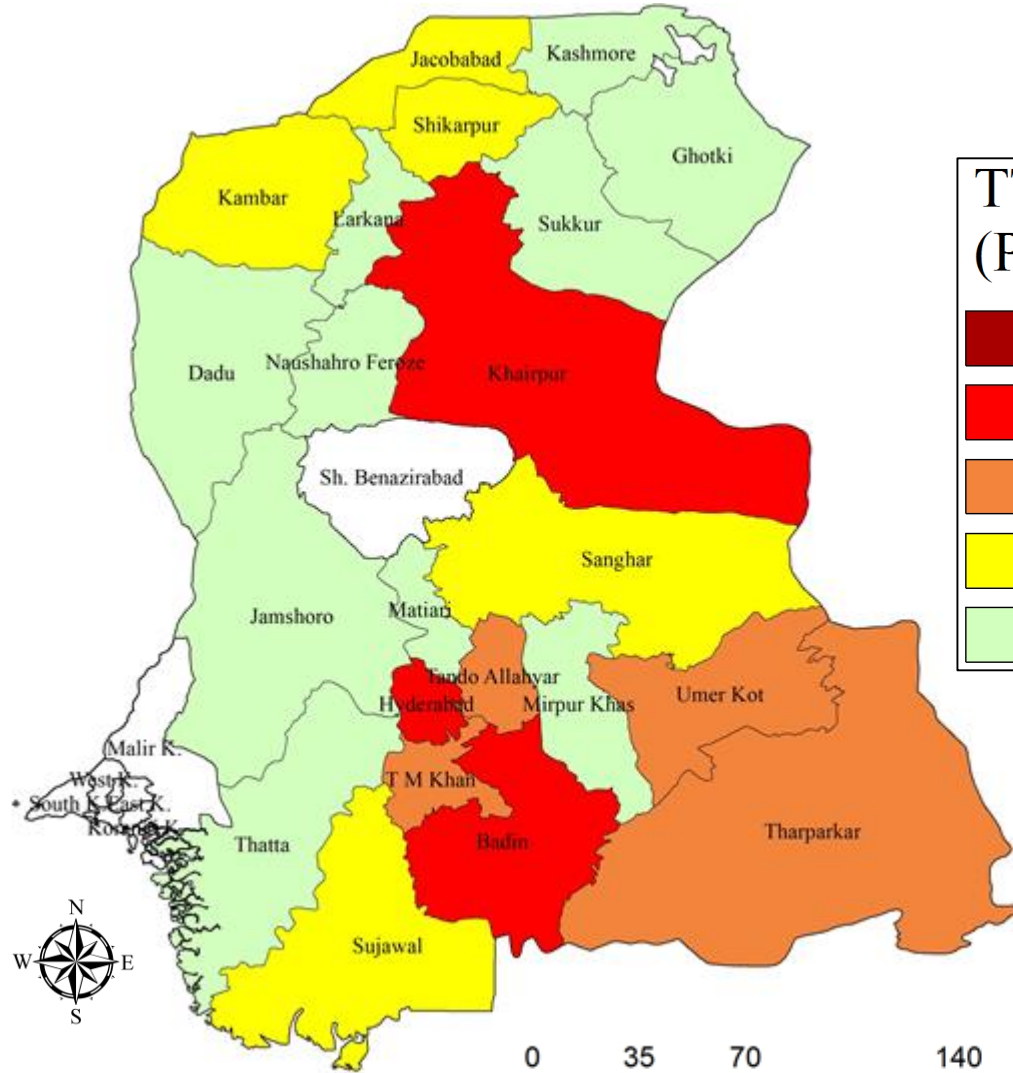
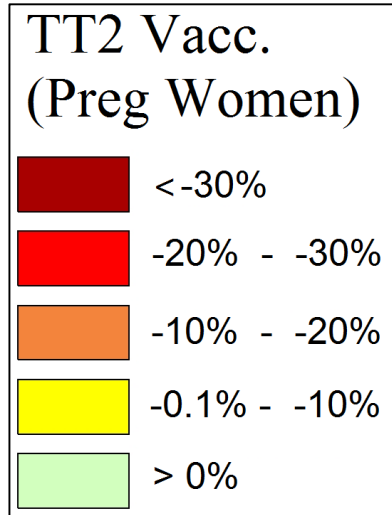


District specific Map Showing % Change in TT2 Vaccine Coverage

Redefining Primary Healthcare

Jan-Feb 2020 vs Mar 2020

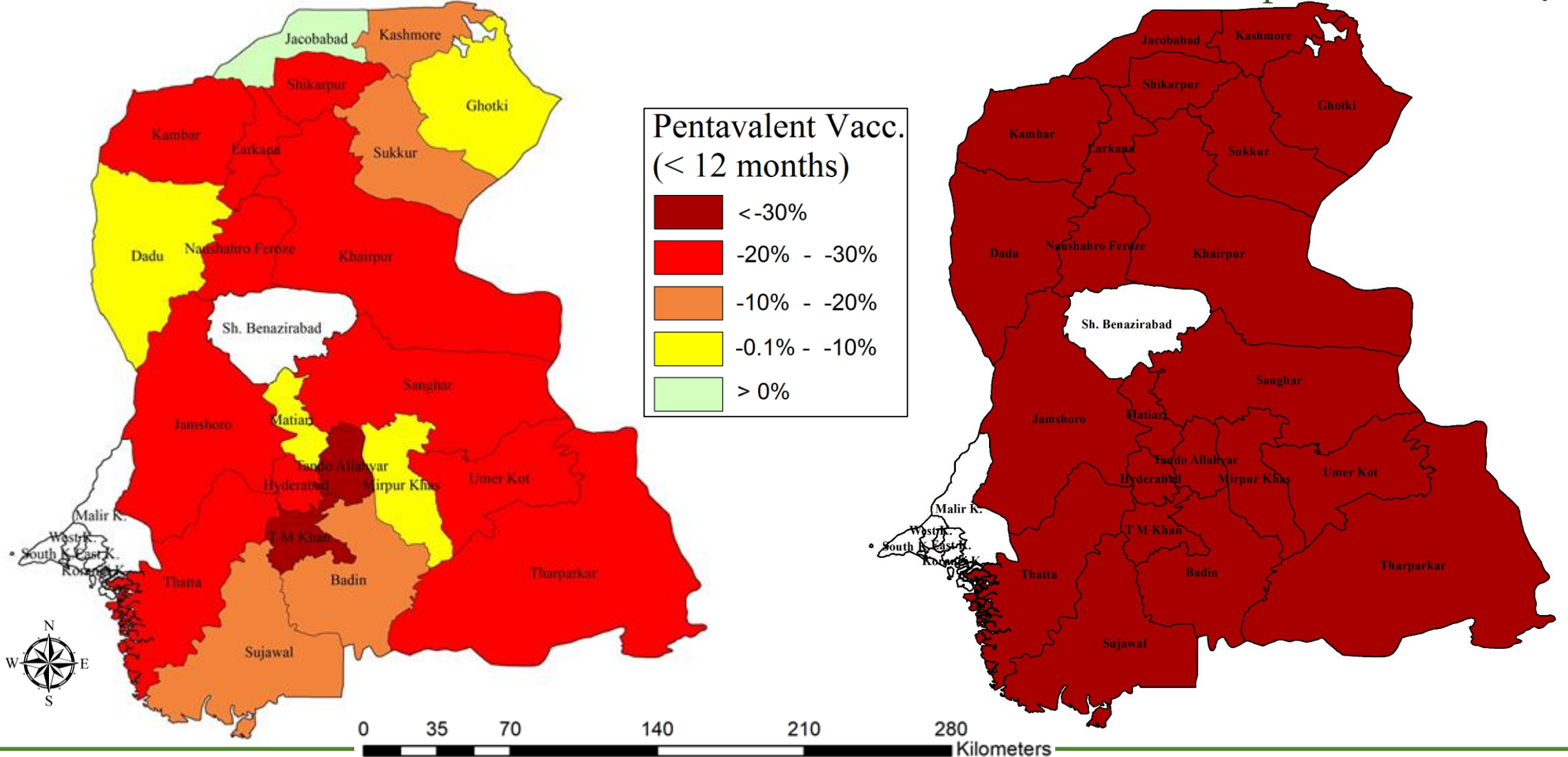
Jan-Feb 2020 vs Apr 2020



District specific Map Showing % Change in Penta-III Coverage

Jan-Feb 2020 vs Mar 2020

Jan-Feb 2020 vs Apr 2020

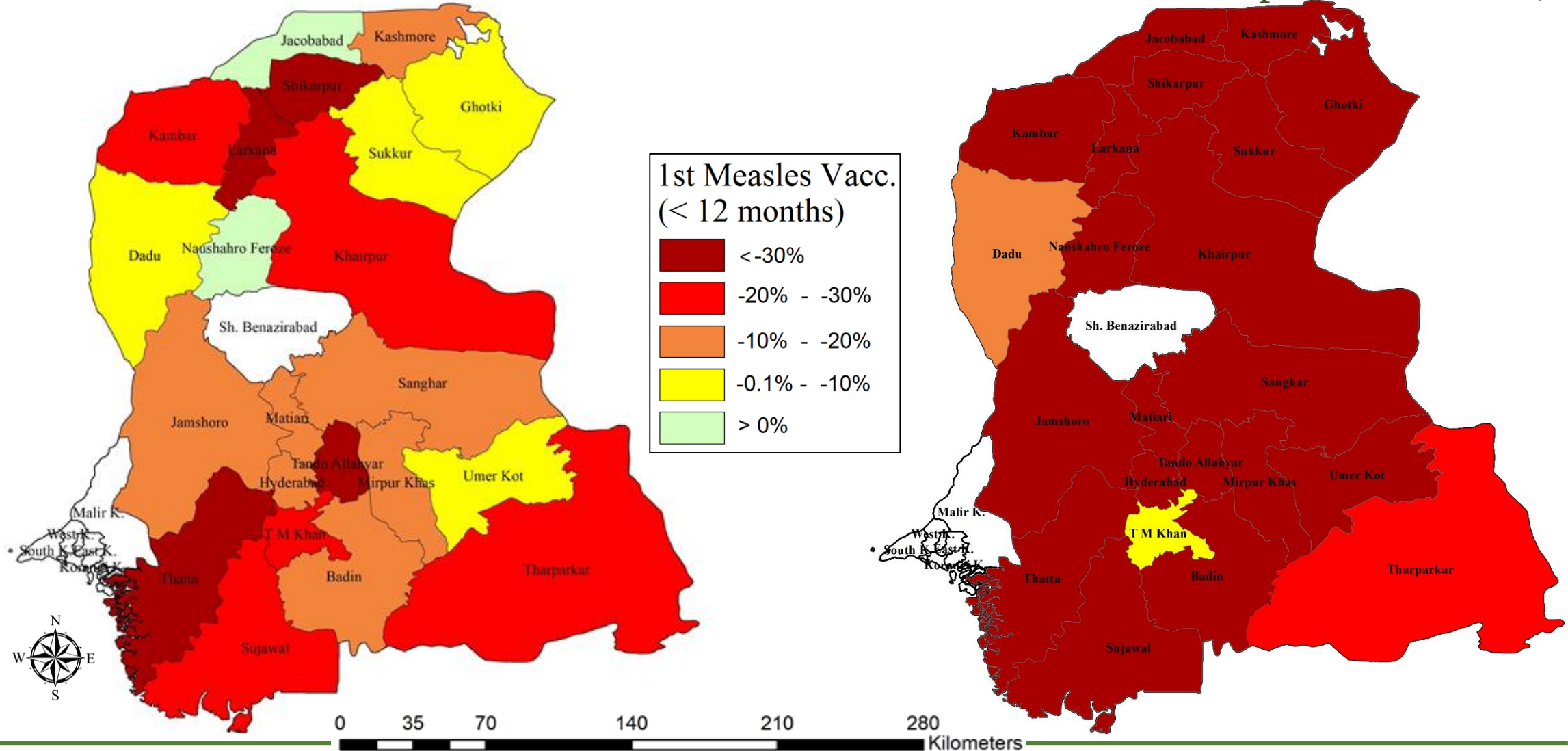


District specific Map Showing % Change in Measles-I Coverage

Jan-Feb 2020 vs Mar 2020

Jan-Feb 2020 vs Apr 2020

Redefining Primary Healthcare



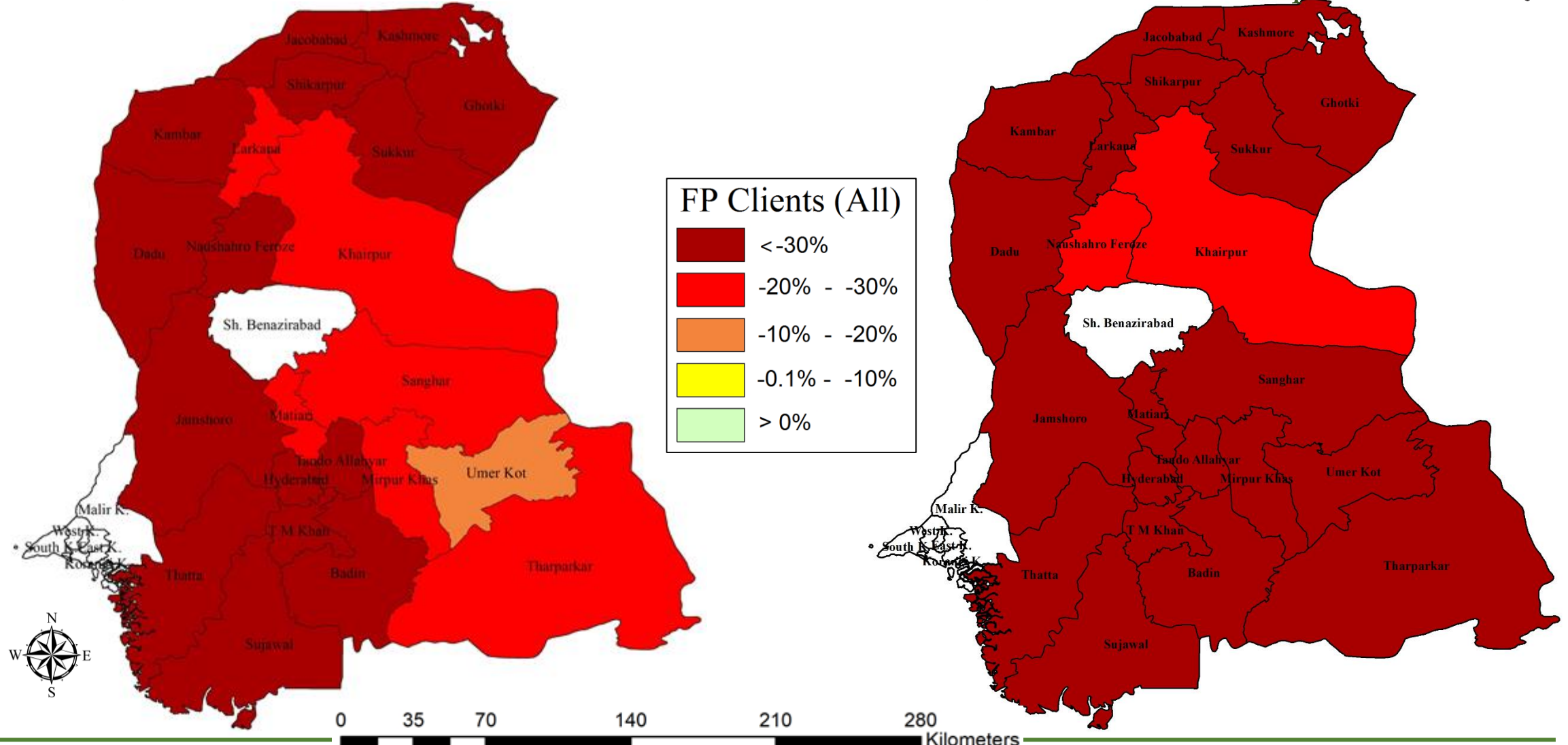
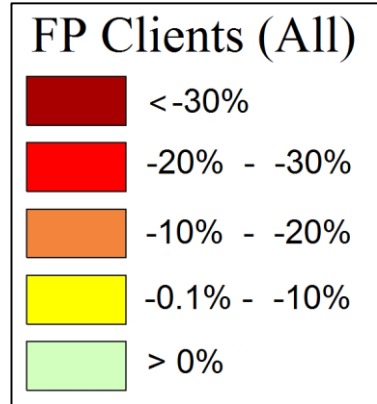
* Showing Average of Jan and Feb months

District specific Map Showing % Change in # of FP Clients

Jan-Feb 2020 vs Mar 2020

Jan-Feb 2020 vs Apr 2020

Redefining Primary Healthcare



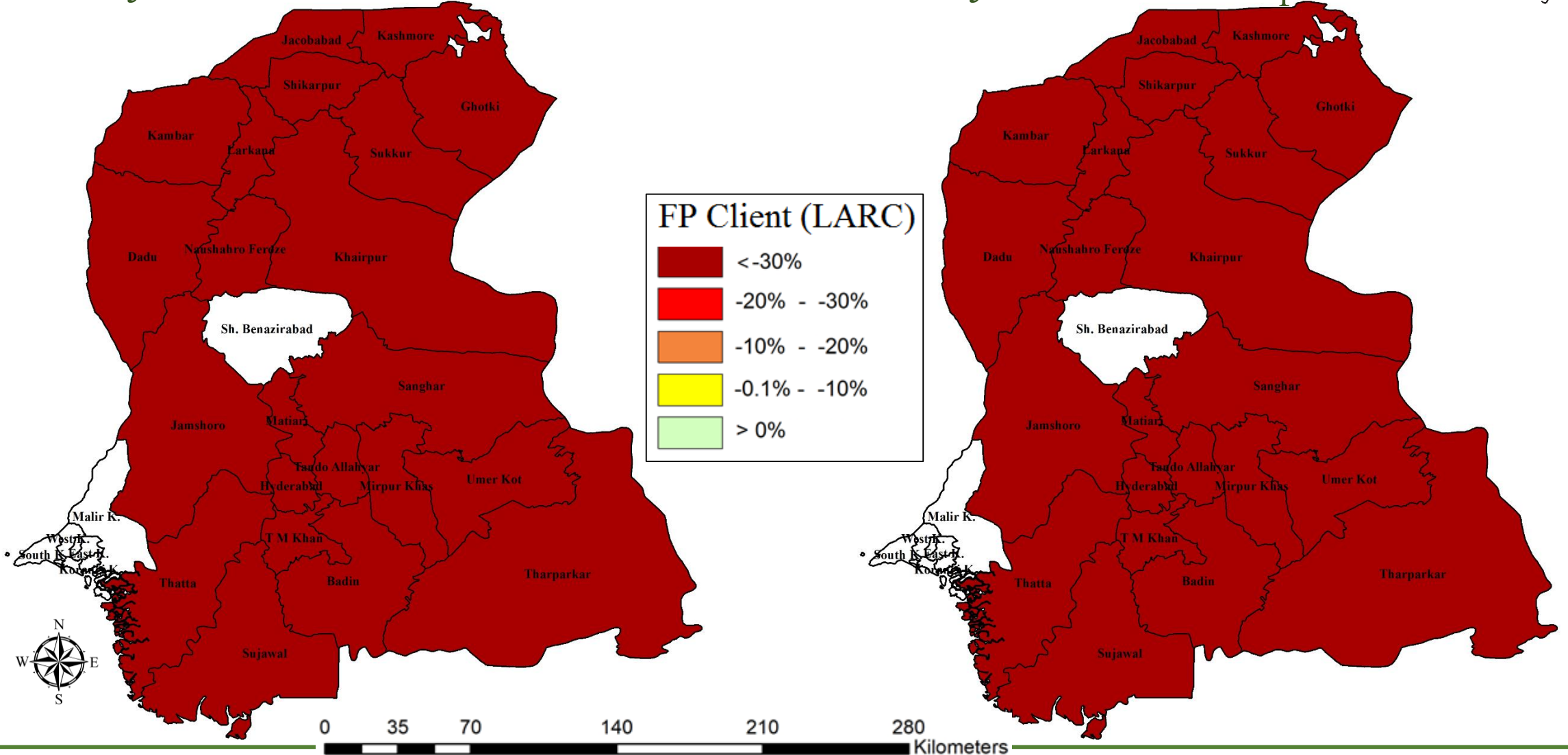
District specific Map Showing % Change in # of FP Clients (LARC Method)



Redefining Primary Healthcare

Jan-Feb 2020 vs Mar 2020

Jan-Feb 2020 vs Apr 2020



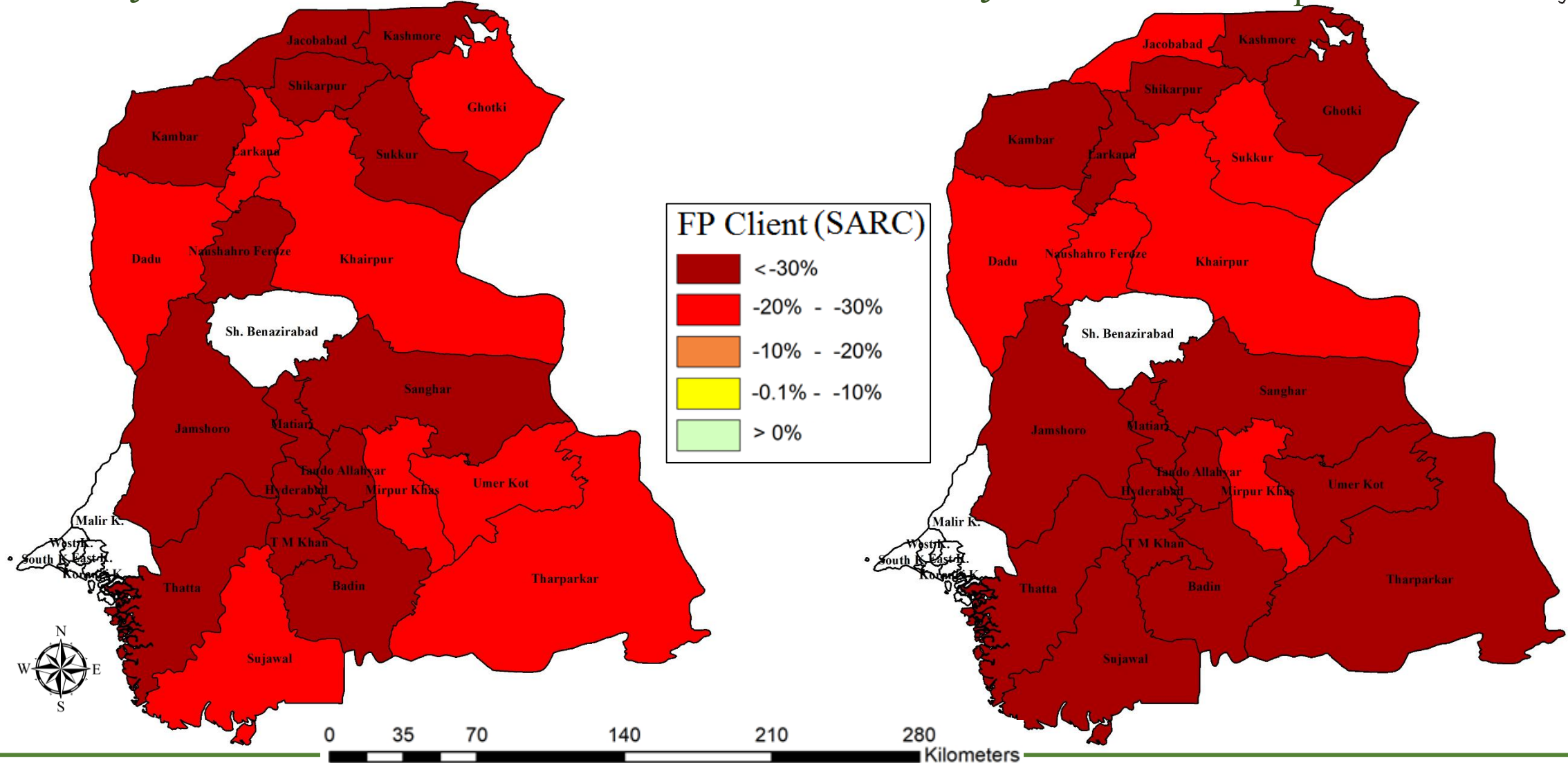
District specific Map Showing % Change in # of FP Clients (SARC Method)



Redefining Primary Healthcare

Jan-Feb 2020 vs Mar 2020

Jan-Feb 2020 vs Apr 2020

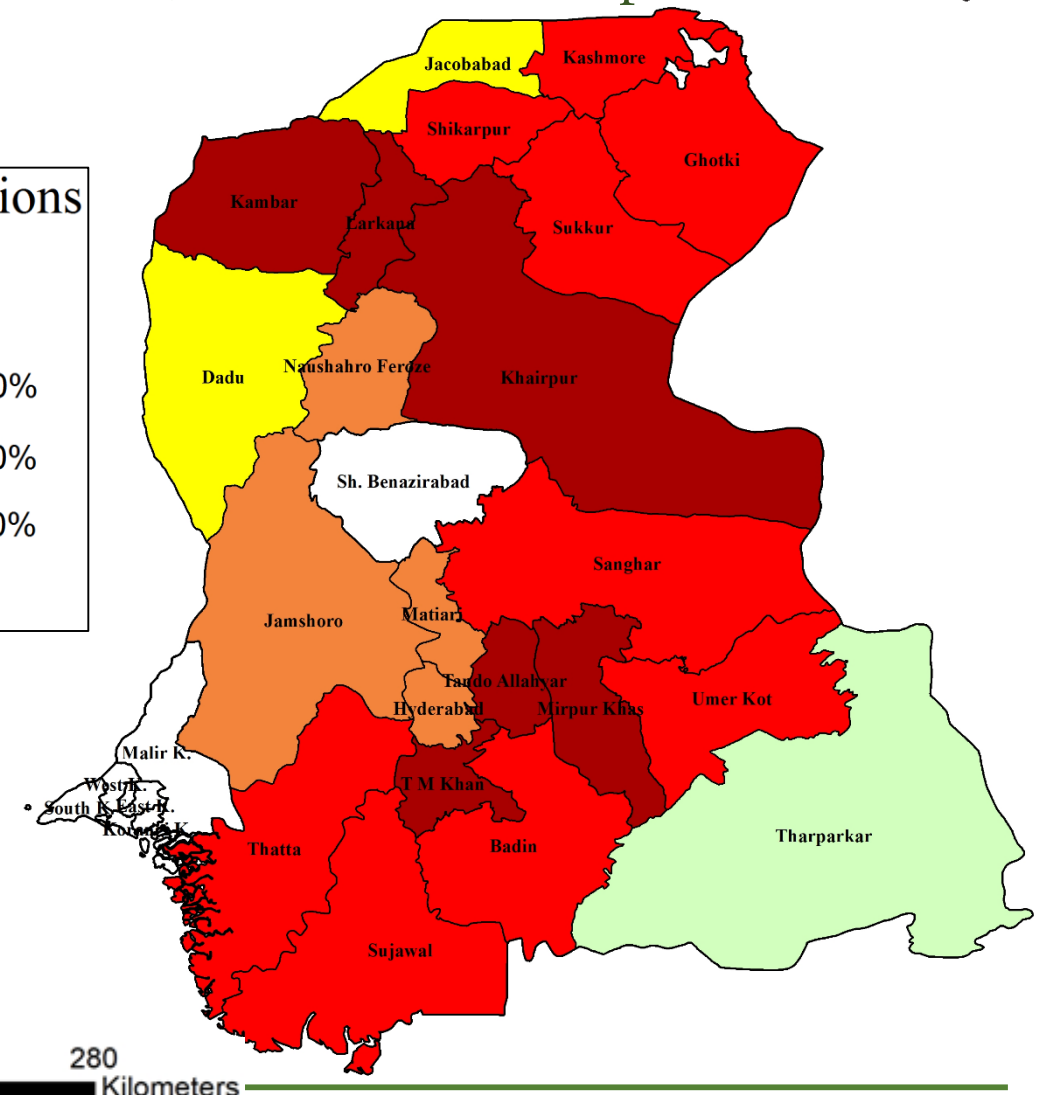
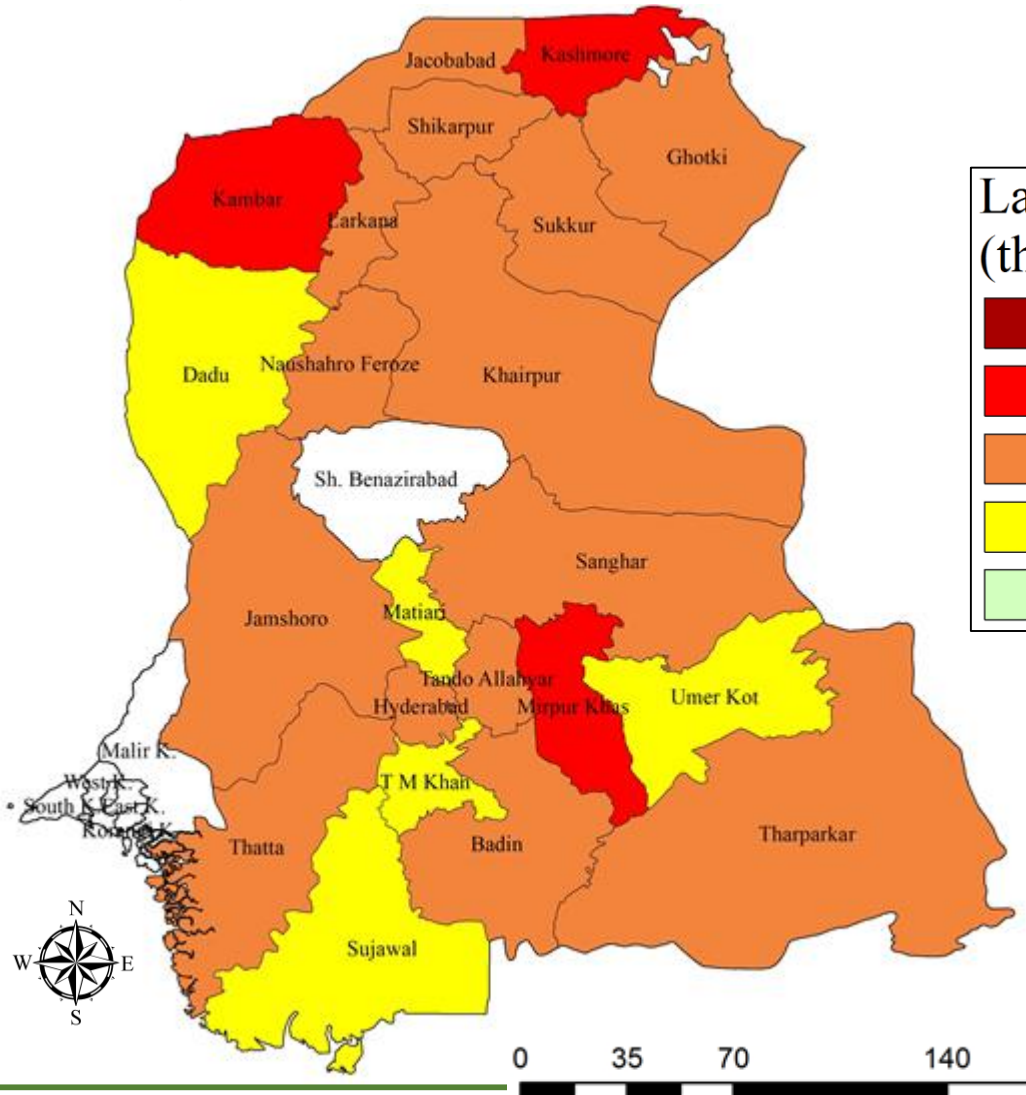
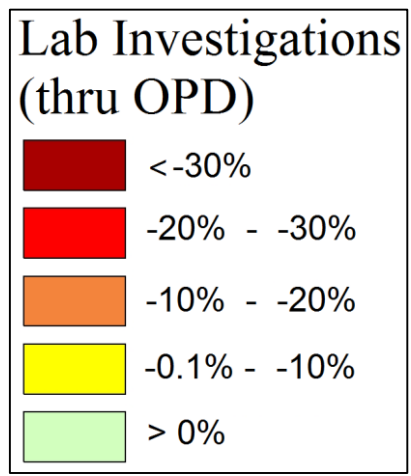


District specific Map Showing % Change in # of Lab Investigation

Jan-Feb 2020 vs Mar 2020

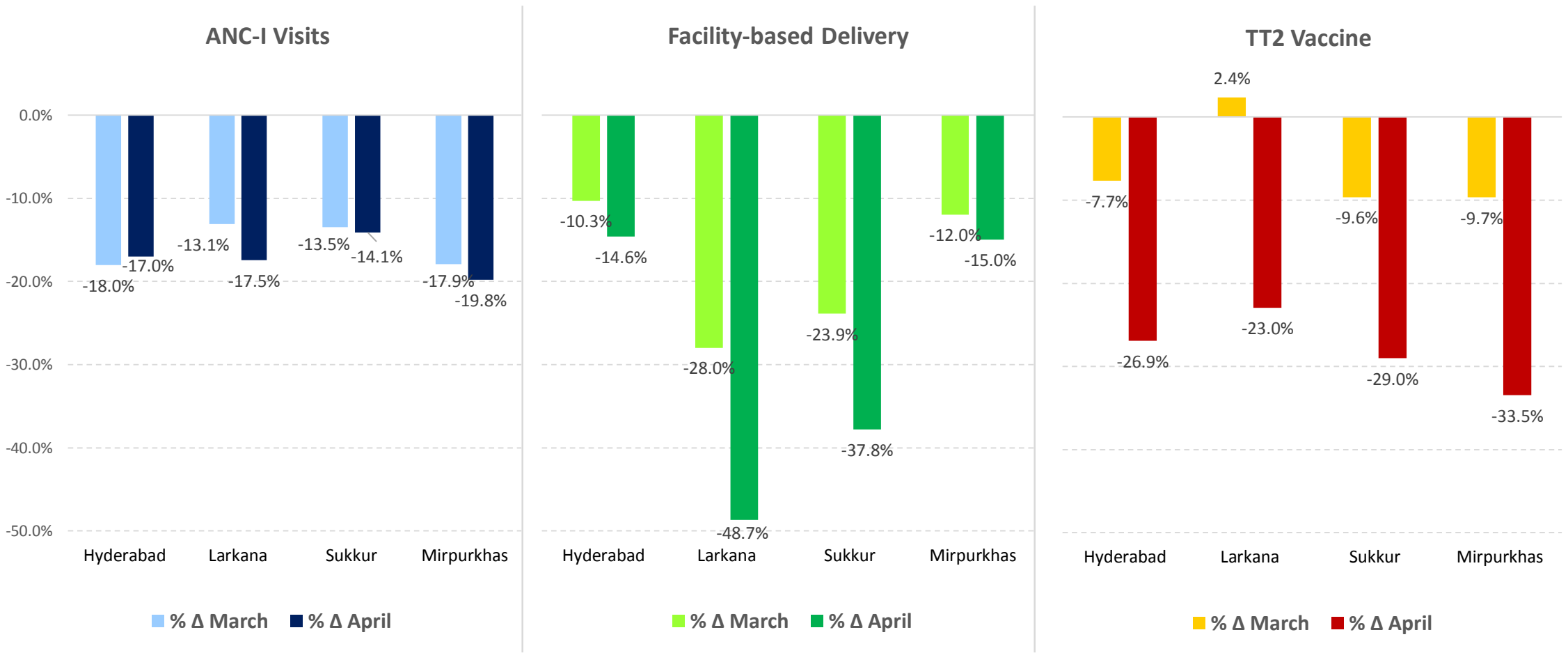
Jan-Feb 2020 vs Apr 2020

Redefining Primary Healthcare



% Change in Coverage of Maternal Health Services – by Region

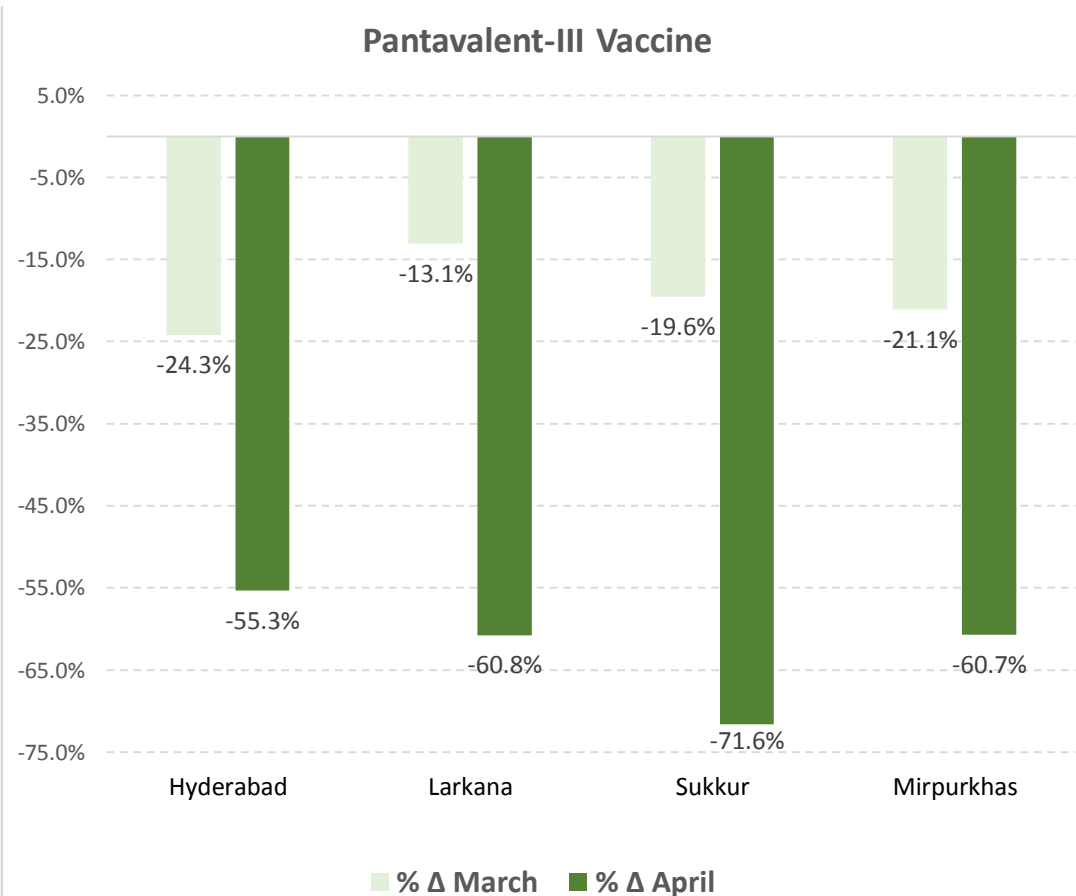
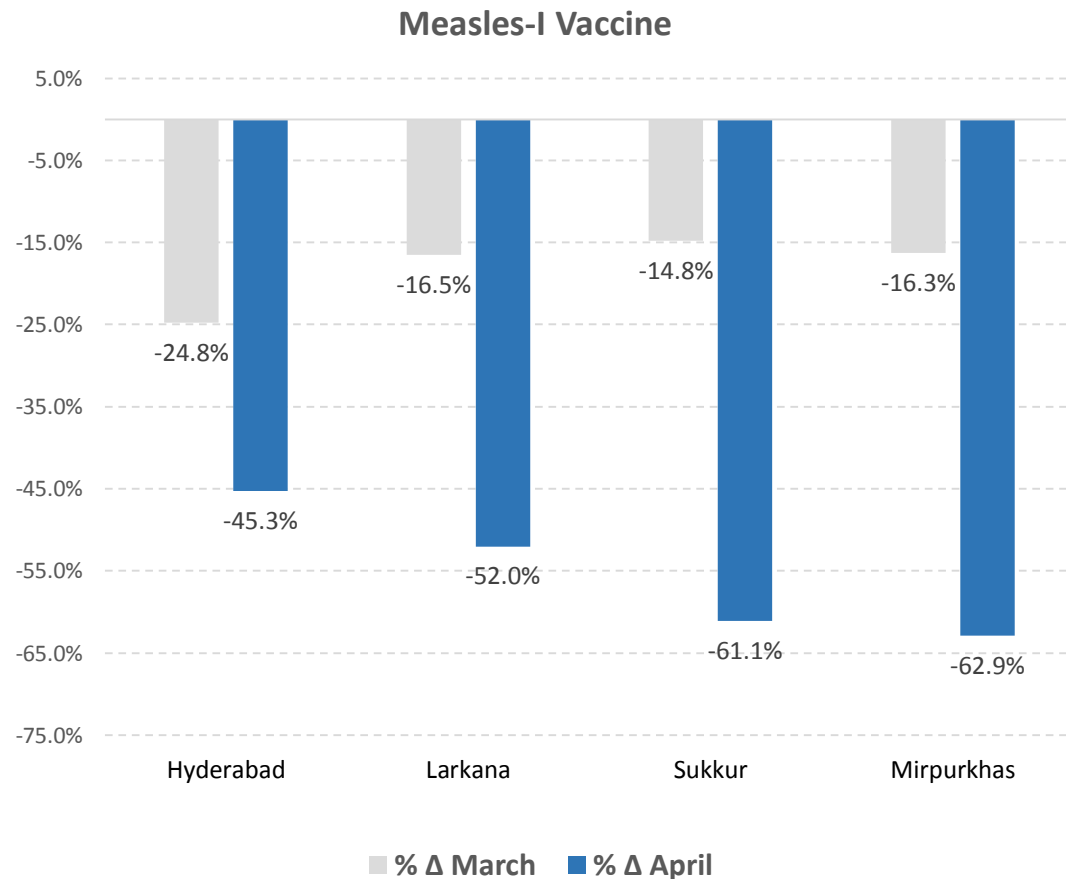
(before and during COVID-19 Outbreak – Jan-Feb 2020* vs Mar-20 & Apr-20)



* Average of Jan and Feb months

% Change in Coverage of Child Immunization Services – by Region

(before and during COVID-19 Outbreak – Jan-Feb 2020* vs Mar-20 & Apr-20)

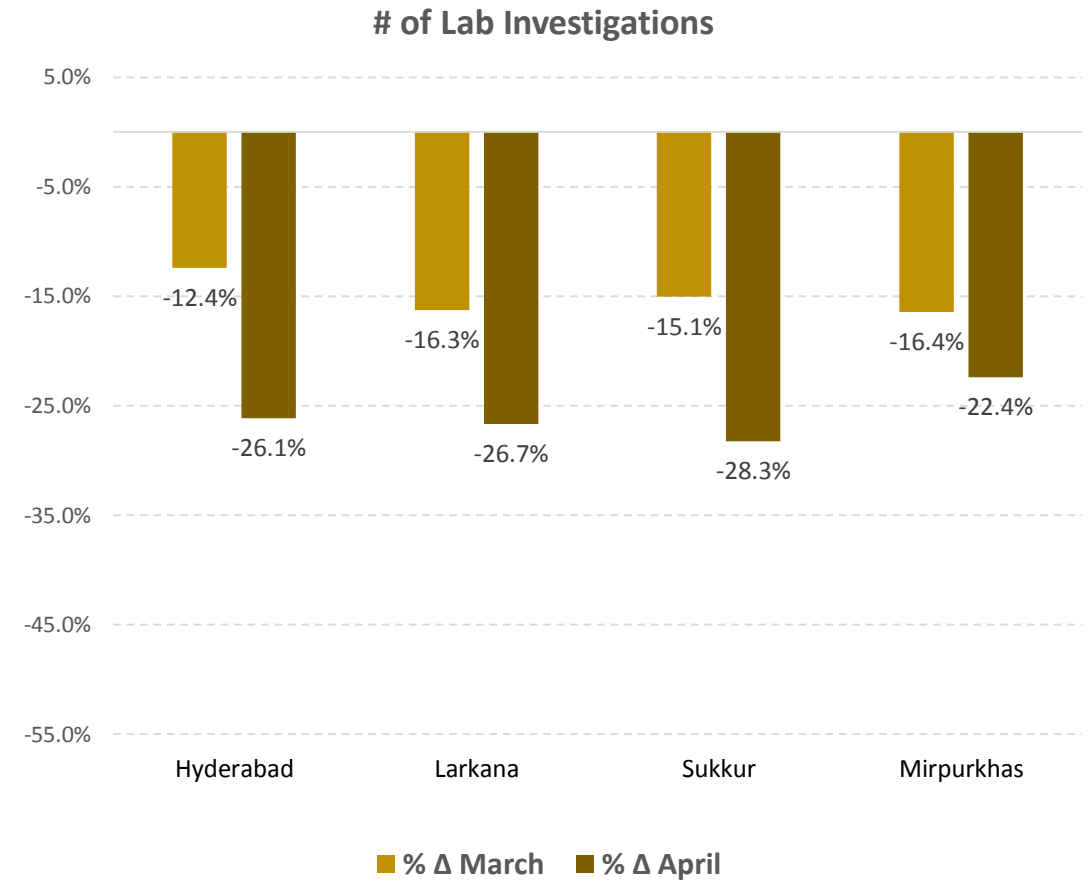
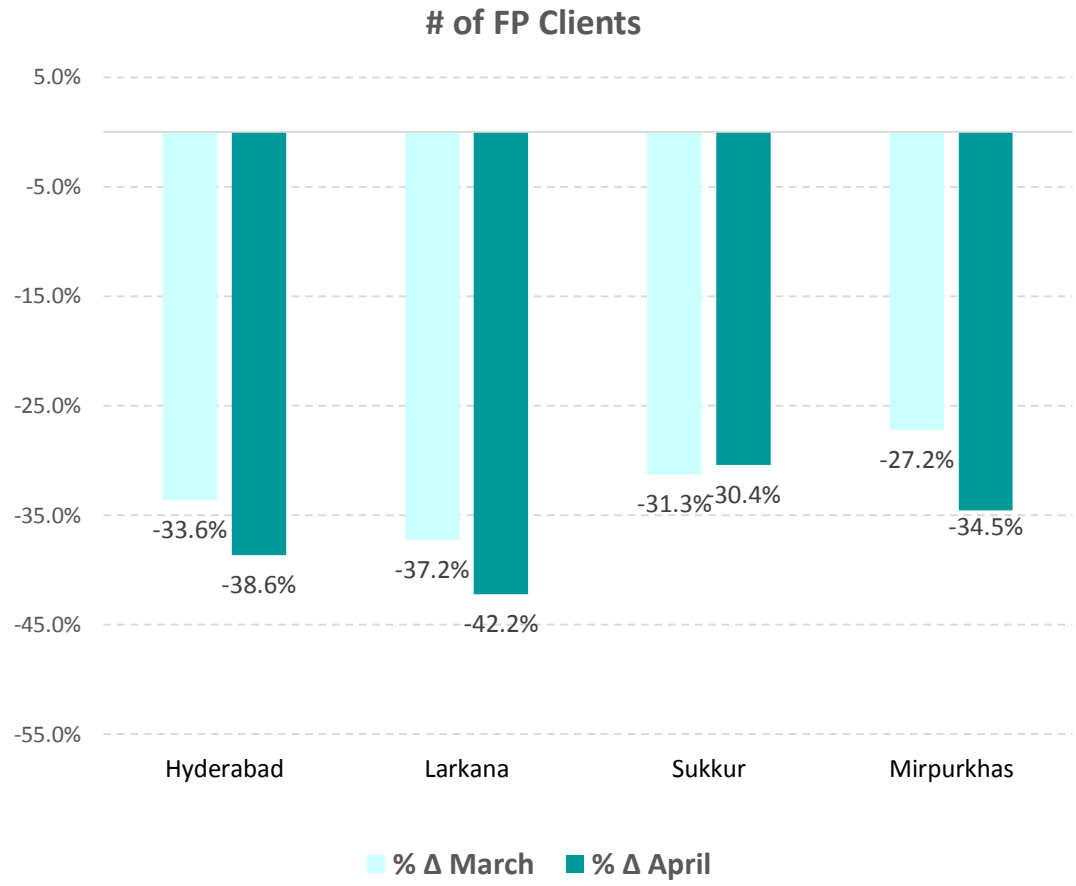


* Average of Jan and Feb months

% Change in Coverage of Other Services – by Region

(before and during COVID-19 Outbreak – Jan-Feb 2020* vs Mar-20 & Apr-20)

Redefining Primary Healthcare



* Average of Jan and Feb months

% Change in Different Health Services – District Metrics

(before and during COVID-19 Outbreak – Jan-Feb 2020* vs Mar-20 & Apr-20)

Redefining
Primary Healthcare

Region	District	OPD Visits		ANC-1		ANC (All visits)		Delivery Coverage		TT2 Vacc. (Pregn)		Measles I Vacc.		Pentavalent III		FP Clients		FP Clients(LARC)		FP Clients(SARC)		Lab Investigation	
		Δ March	Δ April	Δ March	Δ April	Δ March	Δ April	Δ March	Δ April	Δ March	Δ April	Δ March	Δ April	Δ March	Δ April	Δ March	Δ April	Δ March	Δ April	Δ March	Δ April	Δ March	Δ April
Hyderabad	Hyderabad	-11.3%	-33.9%	-19.8%	-5.5%	-13.5%	-5.6%	-3.0%	-2.2%	-26.3%	-46.1%	-14.7%	-60.4%	-28.4%	-67.5%	-33.7%	-38.7%	-68.9%	-81.0%	-35.9%	-40.6%	-19.5%	-16.0%
Hyderabad	Sujawal	1.4%	-30.5%	-14.0%	-16.8%	-3.4%	-10.5%	-0.2%	-22.3%	-0.1%	-42.2%	-27.2%	-49.3%	-18.3%	-51.1%	-31.1%	-39.5%	-79.1%	-91.6%	-23.1%	-32.4%	-4.4%	-20.6%
Hyderabad	Jamshoro	-15.8%	-33.8%	-14.0%	-6.1%	-11.6%	-7.0%	-17.6%	-26.9%	9.0%	-20.7%	-17.1%	-47.4%	-20.9%	-60.8%	-33.5%	-35.8%	-68.8%	-72.3%	-31.8%	-37.5%	-15.0%	-16.1%
Hyderabad	Tando Allahyar	-27.3%	-71.1%	-32.7%	-47.7%	-25.1%	-46.6%	-4.8%	-14.0%	-16.9%	-31.6%	-39.9%	-38.6%	-38.6%	-70.1%	-38.8%	-39.1%	-64.1%	-73.3%	-39.4%	-33.5%	-19.2%	-60.9%
Hyderabad	Thatta	-9.3%	-31.7%	-10.1%	-11.5%	-9.2%	-11.8%	-14.8%	-27.4%	4.4%	-38.7%	-34.2%	-70.0%	-23.7%	-59.3%	-37.8%	-48.4%	-70.4%	-78.8%	-34.9%	-46.9%	-17.1%	-21.1%
Hyderabad	Matari	-13.8%	-32.0%	-14.4%	-11.2%	-5.8%	-9.8%	-18.4%	0.4%	3.9%	-1.7%	-17.5%	-49.0%	-3.5%	-46.3%	-23.8%	-31.8%	-54.4%	-67.3%	-31.4%	-37.6%	-0.6%	-9.6%
Hyderabad	TM Khan	-15.7%	-54.2%	-15.6%	-22.0%	-14.7%	-22.0%	-9.0%	-13.7%	-19.2%	-17.4%	-27.1%	-7.8%	-34.2%	-33.5%	-37.8%	-40.4%	-78.2%	-82.8%	-30.1%	-34.7%	-8.3%	-33.7%
Larkana	Dadu	0.1%	-16.8%	-6.7%	-6.5%	-2.2%	-6.2%	-33.0%	-45.6%	0.3%	-15.5%	-4.6%	-17.1%	-4.6%	-30.3%	-34.0%	-32.1%	-63.6%	-49.8%	-27.2%	-27.3%	-4.2%	-6.5%
Larkana	Jacobabad	-10.9%	-14.2%	-12.5%	0.8%	-7.9%	8.6%	-24.5%	-48.0%	-0.4%	-16.7%	15.1%	-46.7%	7.1%	-54.8%	-33.1%	-33.0%	-56.5%	-70.6%	-30.0%	-25.8%	-14.2%	-4.0%
Larkana	Larkana	-5.9%	-27.2%	-10.2%	-14.4%	-13.5%	-22.8%	-28.6%	-45.2%	27.5%	-5.6%	-34.6%	-70.4%	-21.7%	-89.0%	-29.2%	-38.5%	-64.8%	-76.3%	-23.1%	-30.8%	-14.8%	-34.6%
Larkana	Shikarpur	-29.1%	-37.6%	-16.7%	-24.5%	-19.6%	-20.8%	-28.5%	-42.4%	-7.5%	-18.6%	-39.9%	-70.4%	-25.9%	-57.9%	-39.5%	-35.9%	-49.4%	-54.0%	-40.1%	-33.6%	-18.7%	-29.3%
Larkana	Kamber	-22.6%	-43.8%	-21.3%	-46.2%	-16.5%	-46.0%	-25.4%	-53.7%	-6.0%	-33.8%	-22.4%	-64.4%	-23.3%	-73.9%	-48.0%	-63.8%	-71.5%	-90.1%	-40.7%	-58.1%	-24.6%	-57.7%
Larkana	Kashmore	-12.8%	-25.7%	-14.7%	-19.1%	-11.1%	-17.1%	-27.7%	-54.7%	1.4%	-51.8%	-18.7%	-73.3%	-10.7%	-73.2%	-42.7%	-50.0%	-69.2%	-72.6%	-30.3%	-39.7%	-23.7%	-27.7%
Sukkur	Khairpur	-10.2%	-19.3%	-14.3%	-15.7%	-5.1%	-4.6%	-22.3%	-45.6%	-21.8%	-41.4%	-28.2%	-66.0%	-27.6%	-75.0%	-29.0%	-25.5%	-56.6%	-59.0%	-24.6%	-22.8%	-18.2%	-35.1%
Sukkur	N Feroze	-2.8%	-16.9%	-12.4%	-9.7%	-6.7%	-7.8%	-20.7%	-31.7%	2.7%	-22.1%	0.9%	-66.3%	-24.7%	-75.3%	-33.6%	-26.8%	-51.7%	-48.4%	-31.4%	-24.6%	-12.4%	-13.7%
Sukkur	Sukkur	-11.7%	-31.5%	-21.9%	-17.5%	-18.2%	-19.3%	-28.0%	-32.2%	16.0%	3.8%	-8.8%	-60.1%	-12.0%	-57.9%	-34.9%	-41.6%	-60.9%	-75.0%	-39.8%	-23.1%	-11.2%	-26.6%
Sukkur	Ghotki	-11.3%	-28.6%	-5.6%	-10.7%	3.5%	-1.9%	-25.2%	-33.2%	5.4%	-13.1%	-2.7%	-49.8%	-4.7%	-69.3%	-30.9%	-35.4%	-52.9%	-62.8%	-28.4%	-31.5%	-10.7%	-22.5%
Mirpurkhas	Badin	-12.0%	-33.7%	-17.3%	-12.2%	-13.7%	-15.4%	-18.1%	-21.2%	-24.7%	-64.7%	-16.8%	-84.7%	-14.8%	-77.5%	-32.0%	-40.4%	-66.1%	-73.5%	-33.6%	-34.2%	-15.6%	-19.9%
Mirpurkhas	Mirpurkhas	-14.5%	-41.1%	-18.4%	-27.2%	-14.9%	-23.8%	-13.6%	-21.3%	20.8%	-21.3%	-11.3%	-66.0%	-7.8%	-59.1%	-24.9%	-30.4%	-68.4%	-77.1%	-24.3%	-29.5%	-20.4%	-34.7%
Mirpurkhas	Sanghar	-14.9%	-42.6%	-21.0%	-28.3%	-13.6%	-26.6%	-14.5%	-13.0%	-8.2%	-34.4%	-18.5%	-80.0%	-27.8%	-75.9%	-29.5%	-33.0%	-41.6%	-49.8%	-31.3%	-39.3%	-18.8%	-23.7%
Mirpurkhas	Tharparkar	-14.0%	-39.9%	-11.9%	-1.5%	-4.7%	0.0%	2.9%	10.3%	-13.9%	-16.1%	-20.2%	-20.1%	-27.7%	-33.2%	-28.2%	-32.5%	-59.2%	-67.3%	-26.3%	-33.3%	-11.6%	3.5%
Mirpurkhas	Umerkot	-11.6%	-38.9%	-17.3%	-18.4%	-19.6%	-25.3%	-3.9%	-14.9%	-11.1%	-39.3%	-9.7%	-54.9%	-23.0%	-40.3%	-15.8%	-33.8%	-59.3%	-73.9%	-23.3%	-44.2%	-8.1%	-26.6%

* Average of Jan and Feb months

Conclusion



*Redefining
Primary Healthcare*

- In-depth Analysis reveals that a significant reduction has been observed in converge of all routine services including MNCH, child immunization, FP services, OPDs turnover and lab investigations across all districts.
- A gradual decrease has been observed in the number of clients seeking overall PHC services from month of March to April across Sindh.
- Though there are some variation between districts but on an average a 12.5% decrease from the expected number in routine clients was observed for the month of March at PPHI Sindh facilities across Sindh. However, the decrease in clients was more than doubled at 33.9% for the month of April.
- We suggest districts to approach LHW program and/or approach the community within reach to inquire and address the reasons for low turnover and further help the community to gradually come out of COVID-19 fear.
- District Management and technical teams may workout to inquire why institutional delivery had significantly reduced in their areas. It is suggested to adopt community education and mobilization methods to promote institutional deliveries irrespective of COVID-19 outbreak. Otherwise, maternal and neonatal mortality will significantly increased.
- There is significant drop in routine immunization across all the districts; so there is high risk of emergence of vaccine preventable diseases again like pneumonia, meningitis, measles outbreak which could be more disastrous then COVID-19.
- It is suggested to mobilize our vaccination teams both at fix and outreach setup, to do community mobilization for the uptake of vaccination.
- It is strongly suggested to discuss this serious concern with GoS to look into the matter and ensure vaccine supply immediately. Otherwise we may face another emergency.